

PDU eXpert



kWh POM

PDUeX-KPOM-16A-08H



PDUeX-KPOM-16A-08H series give the necessary flexibility that allow Datacentre Managers to remotely control and monitor PDU's. Remote outlet level controls allow power on/off functionality for power recycling and restart locked-up IT equipment and to avert wrongful use of individual outlets. Equipped with a smart current-meter (True RMS) that shows the total power consumption of the PDU.

PDUeX-KPOM-16A-08H Provide Energy information including Voltage, Frequency, Power Factor, Active Power, Apparent Power and kWh Per Outlet on Daily, Weekly, Monthly & Yearly Power Consumption Data by utility. Users can access, configure, and control **PDUeX-KPOM-16A-08H** PDUs through secure Web, SNMP Interfaces and comes with PDUeX Management software that allow IT Manager to control multiple PDU power consumption simultaneously.

Features:

- ◆ Remote per Outlet power monitoring and total Control Load by Web
- ◆ Remote PDU level and per port power on/off
- ◆ Reboot server with one command
- ◆ Individual, Group, Schedule, Auto Ping
- ◆ Receive SNMP alerts when power or environmental conditions exceed Thresholds
- ◆ Allocate users specific access rights to selected outlets or groups
- ◆ Temperature and humidity monitoring

Key Features :

- ◆ True RMS Current Metering & Reporting
- ◆ Energy information including Voltage, Frequency, Power Factor, Active Power, Apparent Power and kWh provided.
- ◆ Circuit Breaker Protection
- ◆ Local LED Displays Amps, IP Address ,Temperature or Humidity
- ◆ Daily, Weekly, Monthly & Yearly Power Consumption Data by utility
- ◆ Current, Temperature and Humidity Threshold Sensing
- ◆ User Defined Alarm Thresholds
- ◆ Alarm Notification via Email, SNMP, Syslog, LED or Audible Alarm.
- ◆ SNMP Support.
- ◆ SSL Web Browser (Https) for Set Up and Operation
- ◆ Remote Total PDU Power Monitoring
- ◆ Various Input Cable Styles Available - Order Separately
- ◆ Real time control of PDU outlets.
- ◆ Indicate outlets and circuits status with LED.
- ◆ Support power on sequence.
- ◆ Option accessory can support temperature and humidity detection.



PDUeX-KPOM-16A-08H

Warranty: Two years. In addition, PDU eXpert offers optional two years extended warranty. Contact your reseller

PDU Expert UK Ltd, 11b The Cherries, SL2 5TS, Slough, Berkshire,

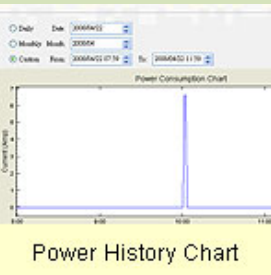
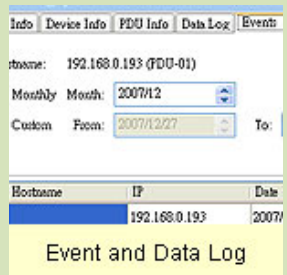
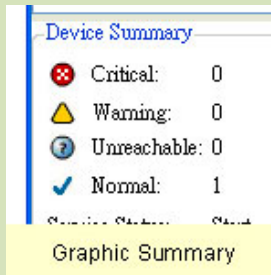
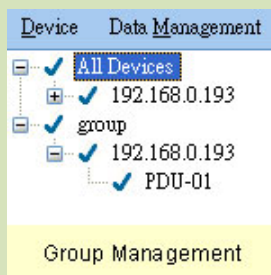
Tel.01753 535 991 info@pduexpertuk.com

www.pduexpertuk.com

FEATURES	
Current Meter	Digital True RMS Current Meter
Power Monitoring	Remote Total Power Monitoring by Meter, Web, SNMP Free PDUeX PDU Management Software
Protocols	Http, Https, SNMP, DHCP,UDP
Outlet Control	Individual, Group, Schedule, Auto Ping
Power Delay	Power on/off Sequence can be Defined
Alarm Thresholds	User-Defined Alarm Thresholds for Warning and Overload
Event Alert	Email, Trap, Audible Alarm
Temp./ Humidity	Option Accessory
GENERAL SPECIFICATION	
Output	(8) IEC320 C13
Input	(1) IEC320 C20 Inlet; Enclosed IEC320 C19 to C20 Power Cord 3 meters
Protection	(1)16Amp Circuit Breaker
COMMUNICATION	
SSL Indication	(1) Yellow LED
DHCP Indication	(1) Green LED
Output Status	(8) Green LED
Circuit Status	(8) Red Led
Network	(1) RJ45 for Ethernet
Temp./ Humidity	(1) RJ11 for ENV. Probe connection
PDU ID	1Digits Seven Segment for PDU Identification
Current Meter	3 Digits Seven Segments for True RMS Meter
POWER INFORMATION PRECISION	
Voltage	+/- 2% @90V~260V
Active Power	+/- 2% @50W~5000W
Apparent Power	+/- 2% @50VA~5000VA
Frequency	+/- 2% @45~65Hz
Power Factor	+/- 0.02 @0.5~1.0
KWh INFORMTION PRECISION	
KWH	Range: 0.001kWh~99999.999kWh Precision: +/- 2% @50W~5000W, kh=1.0
Current	Range: 0A ~ 20 A Precision: +/-2%+/-0.1AMP
OPERATION	
Nominal Input Voltage	230Ve
Output Voltage	200V ~ 240V full range
Frequency	50/60HZ full range
Max.Output	16Amp
Temperature	0 ~ 40 Celsius degree
Humidity	0% ~ 90%
Size	215 x 432 x 44.45 mm
Weight	4.5 kg
Regulatory Approvals	CE, EN 55022 Class A, EN 55024, EN 61000-3-2, EN 61000-3-3 C-Tick AS/NZS CISPR 22: 2006 FCC Part 15 Class A, ICES-003



Web Interface



PDUeX Utility

Group Management

Graphic Summary

Event and Data Log

Power History Chart

PDUeX utility for kWh PDU

PDUeX KPOM SERIES list of models

PDUeX Switched Series	Description
PDUeX- KPOM-16A-08H	Rack PDU 1U 16A 230V IEC C20 Inlet,(8) IEC C13 Outlets
PDUeX- POM-16A-08H	Rack PDU 1U 16A 230V IEC C20 Inlet,(8) IEC C13 Outlets
PDUeX- POM-32A-08H	Rack PDU 1U 32A 230V IEC C20 Inlet,(8) IEC C13 Outlets
PDUeX- POM-16A-08F	Rack PDU 1U 16A 230V IEC C20 Inlet, (8) TypeF Schuko Outlets
PDUeX - ENV	Combined Temperature and Humidity Probe



PDUeX-KPOM-16A-08H

Warranty: Two years. In addition, PDU eXpert offers optional two years extended warranty. Contact your reseller
 PDU Expert UK Ltd, 11b The Cherries, SL2 5TS, Slough, Berkshire,
 Tel.01753 535 991 info@pduexpertuk.com
www.pduexpertuk.com