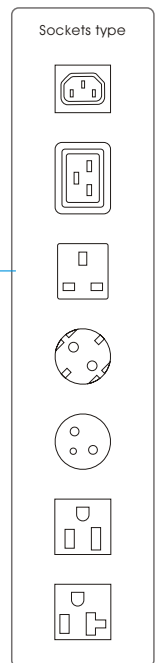
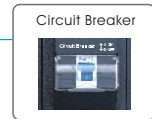
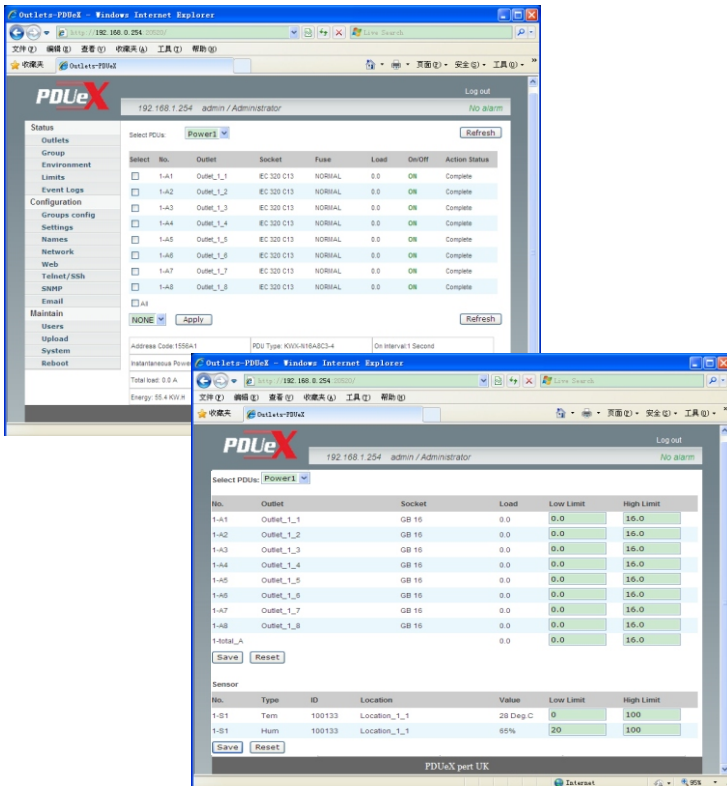


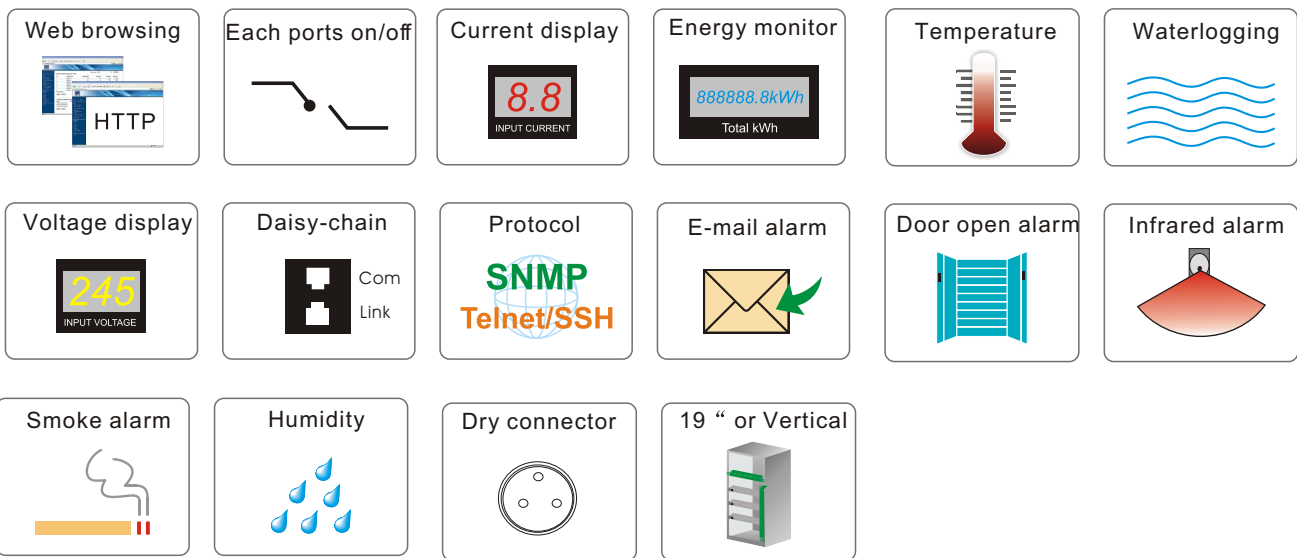
- KWX-N3 and KWX-S3 series** are the new generation of PDU. They combine network power distribution, environmental monitoring and provide real-time remote power consumption of total current load and voltage, Unit Metered, power each outlets on/off, KWX series can be accessed via LAN/WAN or over serial interface.

KWX-N series is a remote monitor PDU with embedded multithreading inner core RTOS (Real Time Operating Systems), that supports multitask and multiuser access. The software supports various TCP/IP protocols, including HTTP, HTTPS, SSL, SNMP, TELNET, SSH, SMTP etc.



KWX-N series PDU offers:

- Control each outlet on/off
- Sequential boot up
- Fuse protection at each port
- Monitor the total current
- Lockable IEC C13
- Monitor when fuse break or outlets can't be controlled
- Unit Metered
- Power status holding
- Power factor recognition
- Monitor each sockets current
- Inspect the fuse status of each ports
- Sequential power on/off
- Surge protection
- Monitor the input voltage
- Monitor the total kwh



Alarm settings

- Total current over the limit
- On the temperature limit
- On the total current limit
- On the humidity limit

Optional:

- Temperature and humidity
- Infrared enters alarm
- Smoke alarm
- Door open alarm
- Water logging alarm
- Dry connection

Dimension

Vertical mounted L × W × D= "X" × 58 × 44.4 mm

"X" means the length can be customized